

# COLLECTIONS RESOURCES CENTER

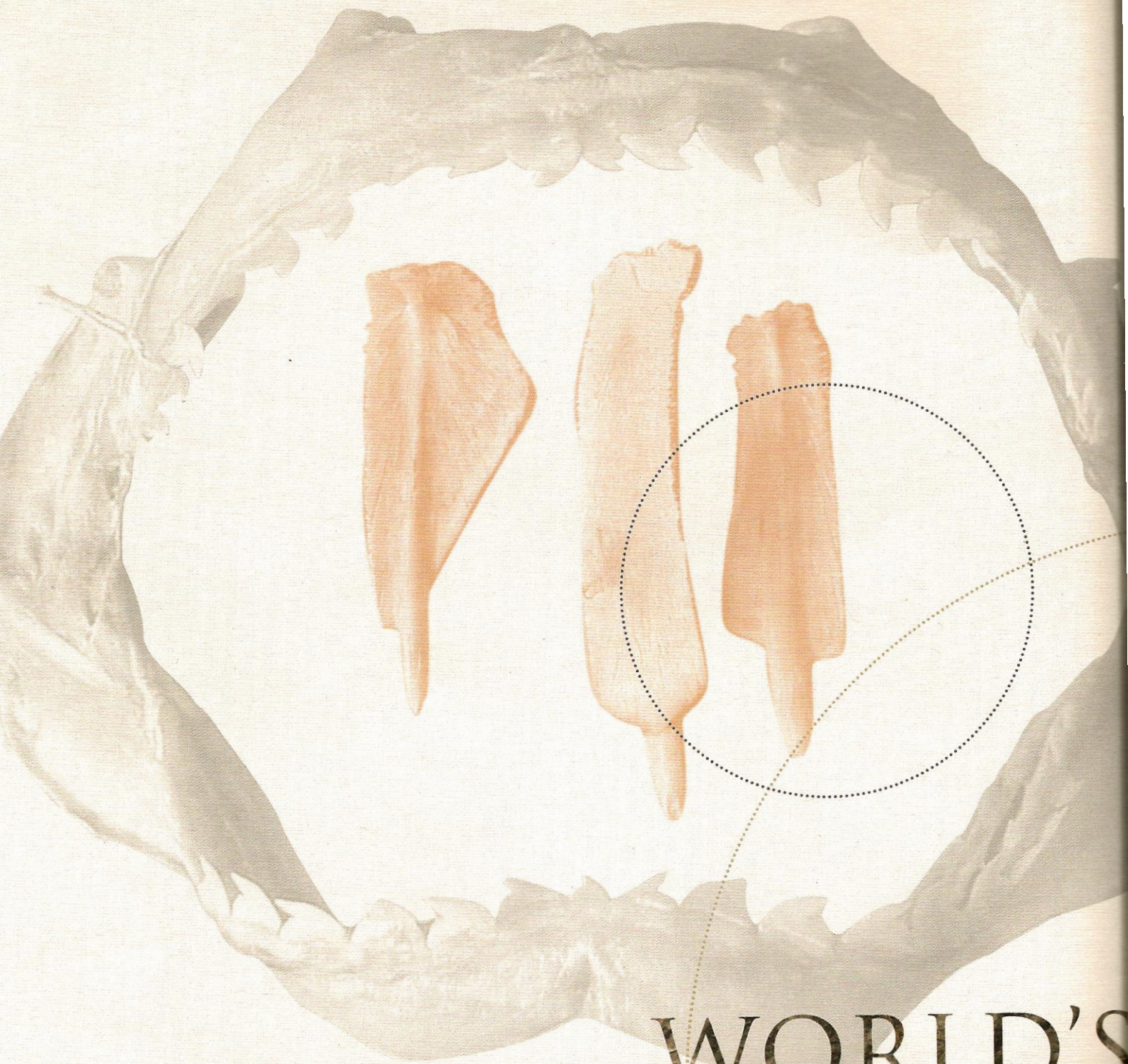
\$68 MILLION

CAMPAIGN FOR THE FIELD MUSEUM

“Although the public rarely sees Field Museum researchers in action, it’s a great disservice to refer to their work as being ‘behind-the-scenes.’ Their research informs every exhibition and is changing the world. This is science with a human face, science that’s explaining who we are and what we’re capable of achieving.”

— CARY J. MALKIN, TRUSTEE

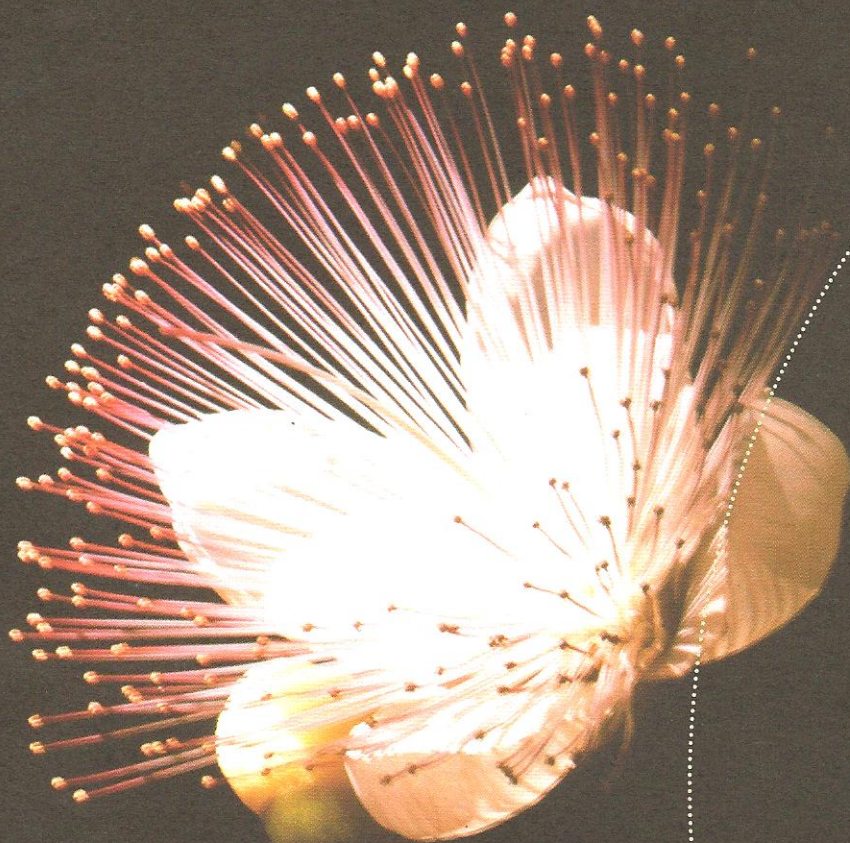




WORLD'S  
SCIENTIFIC

The Field Museum's UNDERSTAND THE PAST, SHAPE THE FUTURE Campaign is a \$176 million initiative covering improvements that will touch every corner of the Museum. As the culmination of our strategic plan, the initiative will enable the Museum to SUSTAIN ITS RELEVANCE AND PROMINENCE IN THE 21<sup>ST</sup> CENTURY. Integral to this endeavor is the Museum's new Collections Resource Center (CRC). The CRC makes certain that The Field Museum fulfills its obligation as steward to

ONE OF THE  
MOST RENOWNED  
COLLECTIONS.



RESPECTING CULTURAL AND BIOLOGICAL  
**DIVERSITY**

*Each individual specimen and artifact tells a story of Earth's distant past, of its geologic and climatic changes, of its flora, its fauna and its peoples. Together, they help us to identify important areas to protect and allows us to prepare the next generation of conservationists around the globe.*



The Field Museum's collections advance the study of life – past, present and future. **THEY FORM THE FOUNDATION UPON WHICH THE MUSEUM'S CONSERVATION EFFORTS AND RESEARCH IN ANTHROPOLOGY, BOTANY, GEOLOGY AND ZOOLOGY ARE BUILT.** With more than 23 million priceless artifacts and specimens, from a rare Sumatran rhinoceros hide to a Japanese statue of Buddha, the Museum is the keeper of essential pieces of evidence for research conducted by Museum scientists and researchers from around the globe.

Each specimen is a reservoir of data, which, through the rigors of research, expands our knowledge of human, plant and animal populations. This knowledge, in turn, contributes to our understanding of cultural and biological diversity and interdependence. Dinosaur fossils tell us the story of extinction, while bacteria fossils explain adaptation and survival.

As modern science develops ever more sophisticated tools for analysis, the value of the collections appreciates because of the secrets they can reveal. One day these plant and animal specimens may help us to identify new classes of pharmaceuticals, alternatives to fossil fuel, disease-resistant genes and the consequences of atmospheric carbon dioxide.

Presently, The Field Museum's collections reside in the crowded quarters of our 80-year-old building. As the collections grow by as many as 500 items per day, laboratory and storage facilities are bursting at the seams. Despite its architectural splendor, the historic physical plant offers limited research space and, without appropriate storage room and environmental controls, cannot adequately preserve these priceless artifacts and specimens.

The Collections Resource Center (CRC) will provide 180,000 square feet of new research and collection management facilities on two levels below the Museum's terraces for two million artifacts and specimens.

The CRC will increase storage and research space by 30% and free 45,000 feet of storage space for public exhibitions and programs. Some of the project's highlights include:

- Public viewing areas so that Museum visitors can observe current work on the collections
- Six uniquely designed laboratories for studying collections, space and equipment for a vast array of scientific inquiry
- A new cryogenic facility that will hold an unparalleled and growing collection of tissue samples and genomes
- Modern compacted storage of cultural artifacts and consolidated storage of wet collections for the Zoology Department's six divisions: Birds, Fish, Insects, Invertebrates, Mammals and Reptiles and Amphibians
- Efficient, modern space for visiting scientists, artists, students, medical personnel and others so that they may learn and teach using The Field Museum's resources
- Dust removal and housing for tens of thousands of ethnographic collections from around the world
- Re-integration of disparate collections from small storage rooms throughout the Museum
- Strict environmental controls and state-of-the-art alerts such as floor sensors that activate alarms if a drop of water falls
- An inert-gas fire suppression system



*A 500-pound meteorite, Komodo Dragons, Tibetan cannons, a Plains Indian headdress, glass vases from Pompeii, carved gourds from Africa, jars of rattlesnakes and a literal barrel of monkeys – two million artifacts and specimens are making their way to safe keeping, in a brand-new, environment-controlled CRC.*



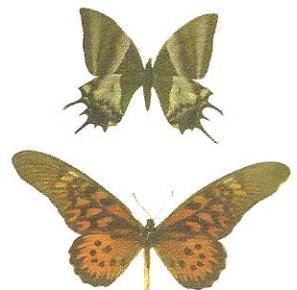
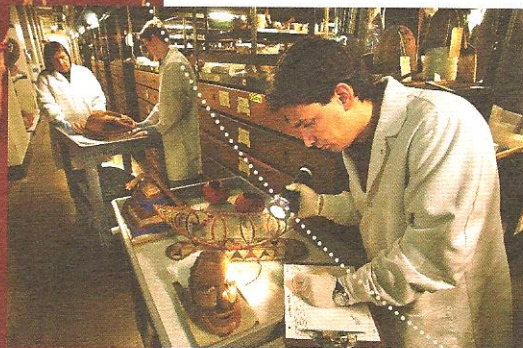
## WHY THE COLLECTIONS RESOURCE CENTER NEEDS YOUR SUPPORT

From the tourist economy to the scientific and educational communities, The Field Museum has an enormous local presence. Visitors from all 24 time zones come to gaze up at SUE, the world's largest *T. Rex*. Esteemed universities enjoy collaborative relationships with the Museum's scientists and have privileges to use our collections for research. Sister museums have benefited from exhibit loans from the Field's collections. With a reach far beyond our city limits, we have served as ambassador to thousands of visiting researchers from around the world who come to study the Museum's specimens and artifacts.

In conserving the Museum's collections, we protect a crucial part of the world's collected knowledge, guiding us as we unravel the mysteries of the past and leading us to a greater understanding of our cultural traditions and natural surroundings. With this understanding, tomorrow's scientists, leaders and citizens have the tools to answer the questions of their time.

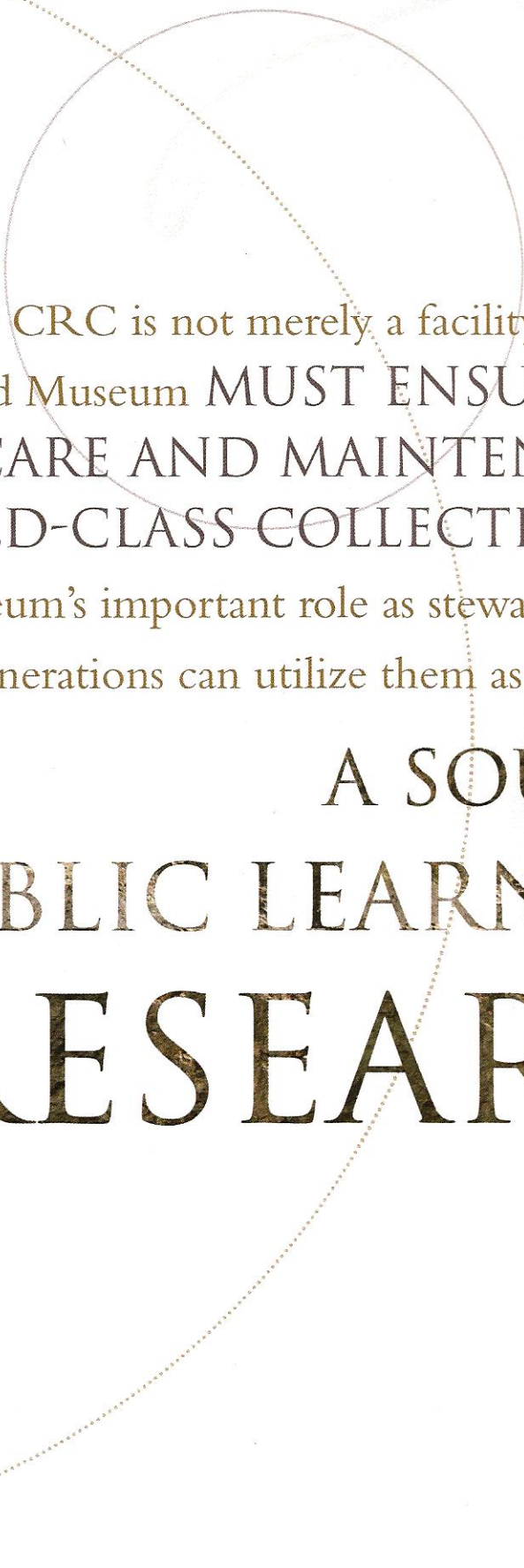
## DONOR RECOGNITION

A wide range of naming and acknowledgment opportunities is available for support of the *Collections Resource Center* (CRC) at most gift levels. Available selections may include recognition displayed prominently in Stanley Field Hall; in programming materials and advertising; in CRC preview and opening materials; in media releases and in a variety of Museum printed materials.



*Comparative collections help us identify new species and learn what has happened to known ones over time. They can tell us about human culture and how humankind's past and present behavior impact nature's populations.*



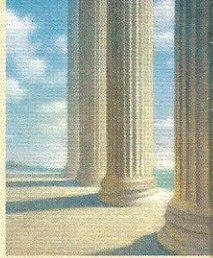


The new CRC is not merely a facility, it is a responsibility. The Field Museum **MUST ENSURE THE PROPER USE, CARE AND MAINTENANCE OF ITS WORLD-CLASS COLLECTIONS.** The CRC confirms the Museum's important role as steward to the collections so future generations can utilize them as

**A SOURCE OF  
PUBLIC LEARNING AND  
RESEARCH.**

CAMPAIGN *for* THE FIELD MUSEUM

UNDERSTAND THE PAST  
SHAPE THE FUTURE



THE FIELD MUSEUM

1400 South Lake Shore Drive  
Chicago, IL 60605-2496

[www.fieldmuseum.org](http://www.fieldmuseum.org)

