

The Field  
Museum

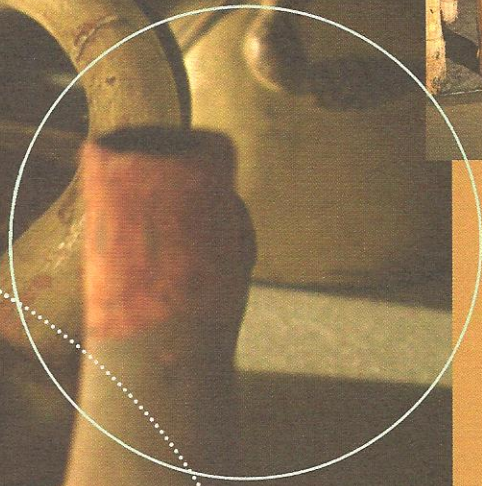
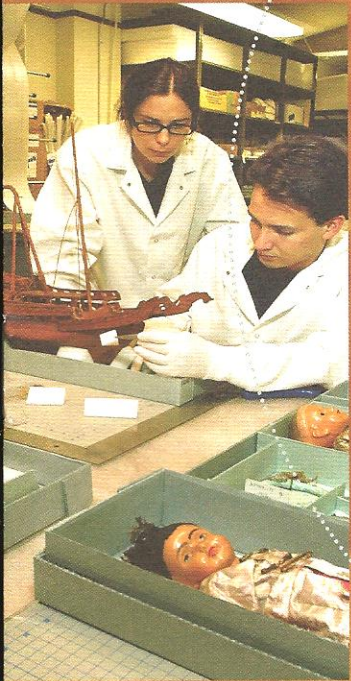
CAMPAIGN FOR THE FIELD MUSEUM

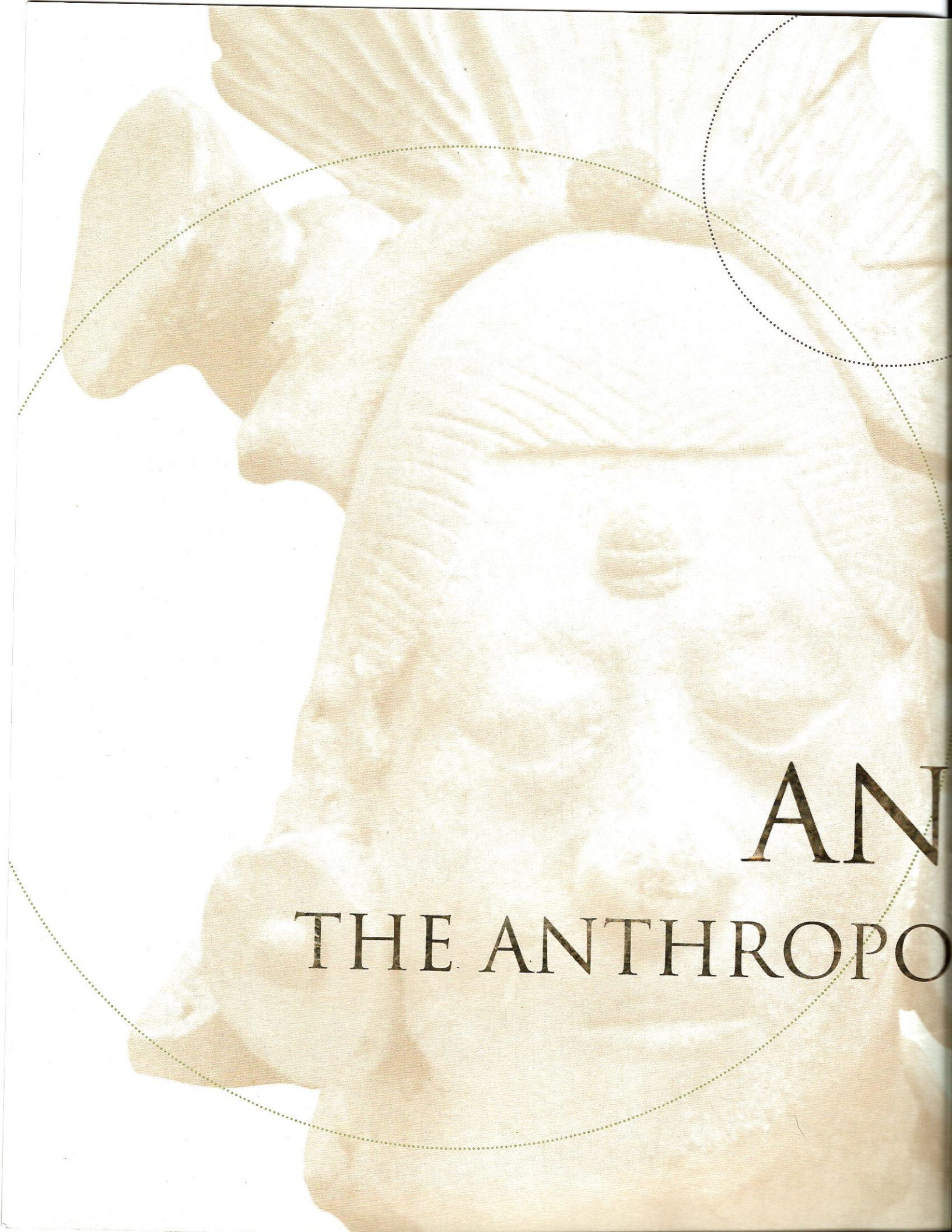
“The Field Museum is a true and wonderful laboratory – for kids to experience wonder and learn, for scientists to carry out serious work and for the public to be entertained and educated.”

– MELLODY HOBSON, TRUSTEE

# ANTHROPOLOGY LABORATORY

\$3 MILLION





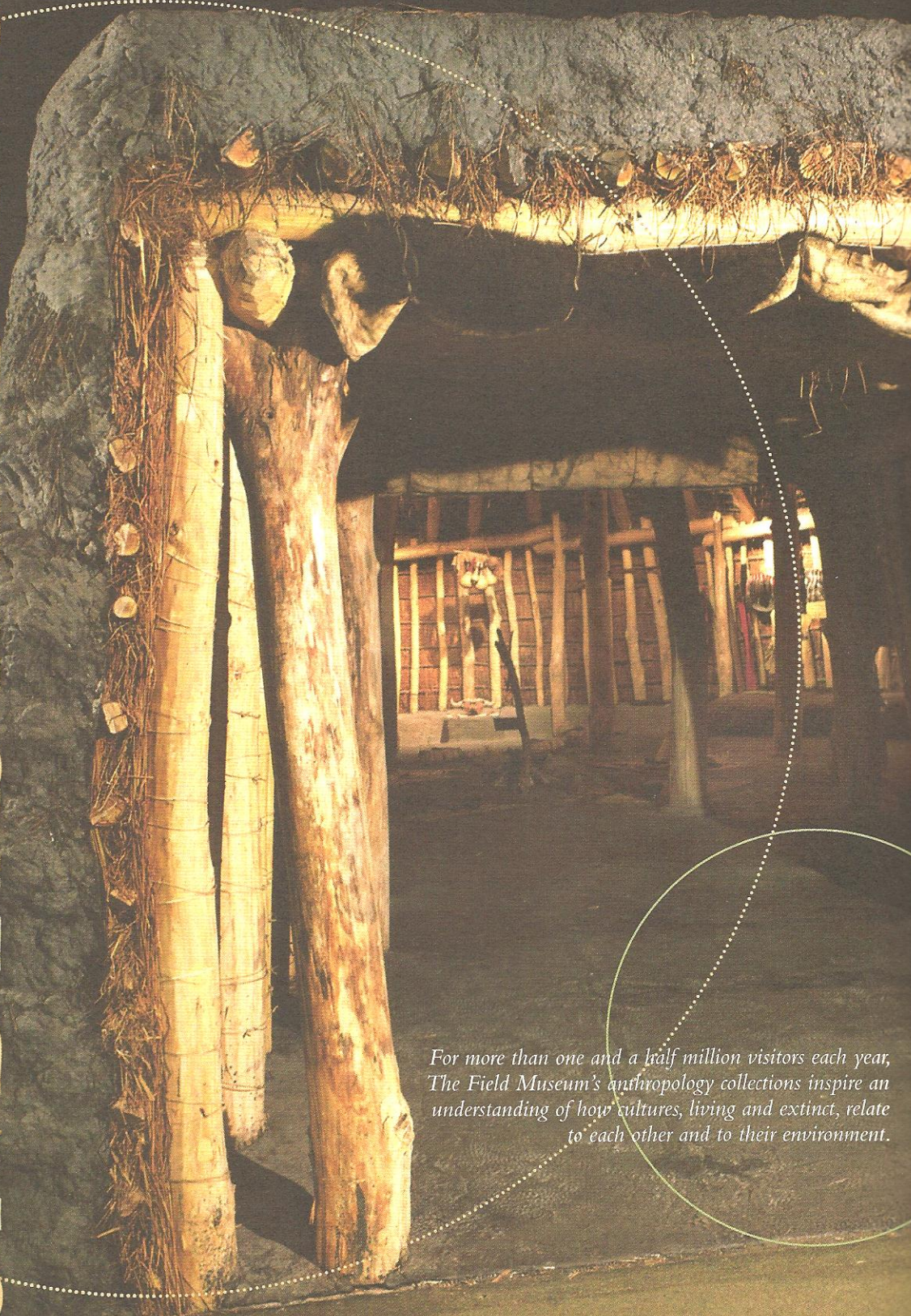
AN

THE ANTHROPO

The Field Museum's UNDERSTAND THE PAST, SHAPE THE FUTURE Campaign is a \$176 million initiative covering improvements that will touch every corner of the Museum. As the culmination of our strategic plan, the initiative will enable the Museum to SUSTAIN ITS RELEVANCE AND PROMINENCE IN THE 21<sup>ST</sup> CENTURY. Integral to this endeavor is the Museum's plan

TO RENOVATE  
AND UPGRADE  
TECHNOLOGY LABORATORY.

SCIENTIFIC AND CULTURAL  
**UNDERSTANDING**



*For more than one and a half million visitors each year, The Field Museum's anthropology collections inspire an understanding of how cultures, living and extinct, relate to each other and to their environment.*

Since The Field Museum's beginnings, ethnological and archaeological collections have formed its central identity.

The anthropology collections now include more than 1,500,000 objects from every part of the world.

**BUT THE NUMBER OF OBJECTS ALONE AND THEIR GEOGRAPHIC DISTRIBUTION CANNOT CONVEY THE IMPORTANCE OF THESE HOLDINGS AS THE MUSEUM WORKS TO REVEAL THEIR SCIENTIFIC VALUE AND ENHANCE OUR CULTURAL UNDERSTANDING.**

Soil samples gathered at a site in southern Mexico yield knowledge about how people grew, stored, distributed and consumed agricultural crops hundreds of years ago. Fragments of Mesopotamian bone tell us about migration and social organization in cities thousands of years old. A beaded doll from South Africa informs an artist's choice of symbol or palette. Right here in Chicago, our vast and rare collections provide a basis for addressing crucial contemporary problems such as how to respect and preserve cultural diversity, and how to protect the natural diversity on which all life depends.

Our researchers, conservators and collections managers are top-notch, but the space in which they work is not. Built in 1924 and last renovated in 1965, the labs suffer from physical deterioration and overcrowding. Additionally, insufficient climate and space controls threaten the condition of artifacts within the labs. Improvements to the Anthropology Laboratory will enable The Field Museum to manage its collections even better and guarantee their availability to future generations.



The Field Museum's commitment to sharing anthropology collections with a wide audience through public exhibits, loans, tours and school programs means that one-of-a-kind artifacts travel constantly either within the Museum or around the world. Registering and cataloguing objects enables them to be tracked accurately through their many uses inside and outside the Museum. In a new and much-needed Registration Center, staff will catalogue new objects, take digital images and work to integrate data in the anthropology collections database.

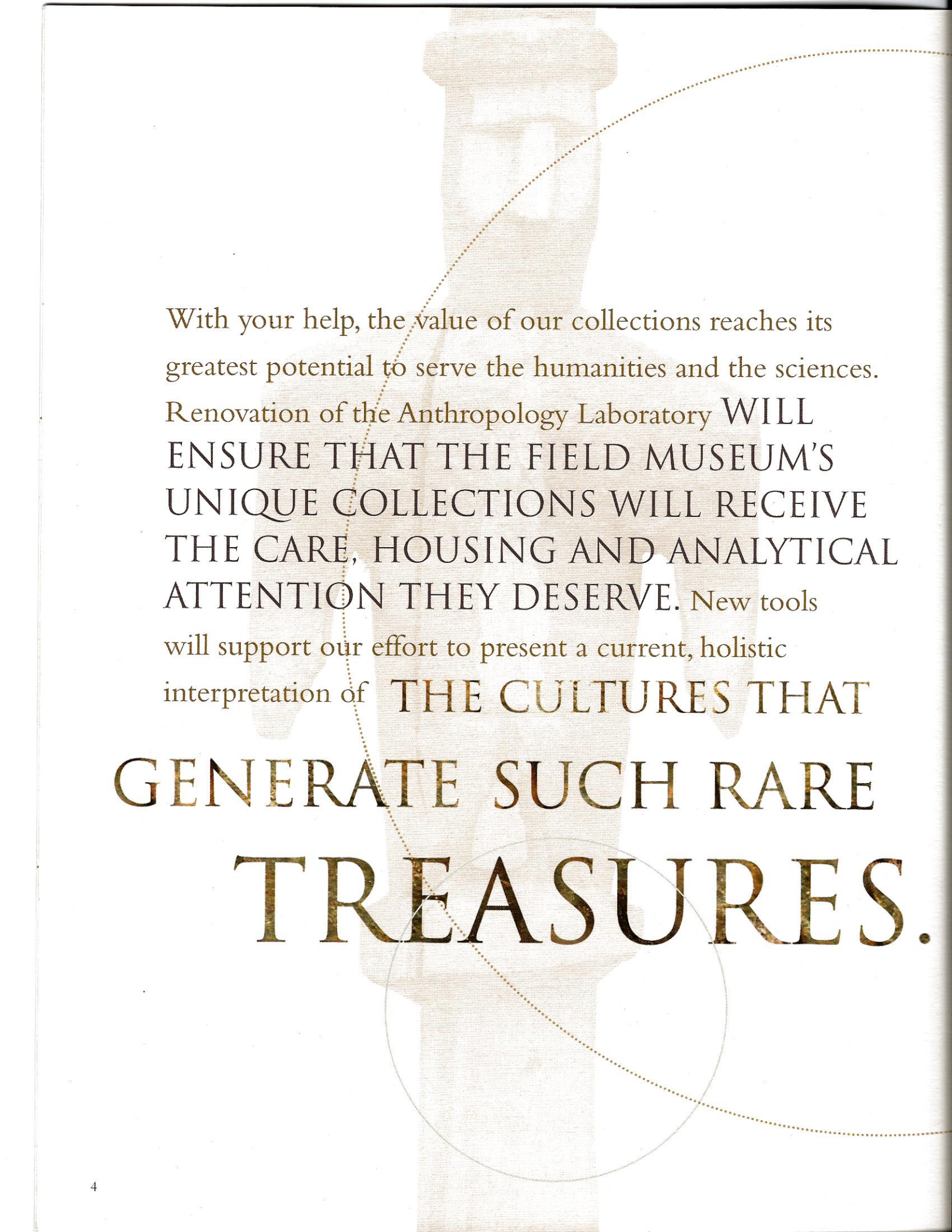
The new space will house several specialized labs: conservation, research and collections management laboratories.

Analysis, exhibition, travel and time pose unique challenges for artifacts. Meticulous conservation requires particular storage conditions and handling techniques. In the new Conservation Labs, improved equipment will ensure that the rigors of study and travel do not threaten the objects, which we hold in trust for the future.

An enhanced Research Lab will enable curators, staff, visiting scholars and tribal representatives to unlock answers hidden in each artifact. A newly acquired inductively coupled plasma-mass spectrometer (ICPMS), a tool for analyzing trace elements in soils, minerals and artifacts, is helping us understand the past. Trace elements found in bones and teeth can identify patterns of human migration, telling us where people were born and when they moved.

In the Research Lab, a Chemistry Lab reorganized for safe storage and application of chemicals and efficient use of space will enable staff to analyze artifacts, teasing out the chemical compositions and revealing information about relationships between people, animals and plants.

The new Collections Preparation Lab will furnish the Museum with much-needed space to ensure that rare and irreplaceable items are given the best treatment for their preservation. A new conference room will provide space for hundreds of visiting researchers, tribal delegations, staff, students and volunteers to meet.



With your help, the value of our collections reaches its greatest potential to serve the humanities and the sciences. Renovation of the Anthropology Laboratory WILL ENSURE THAT THE FIELD MUSEUM'S UNIQUE COLLECTIONS WILL RECEIVE THE CARE, HOUSING AND ANALYTICAL ATTENTION THEY DESERVE. New tools will support our effort to present a current, holistic interpretation of THE CULTURES THAT GENERATE SUCH RARE TREASURES.

*With a collection of more than 1.5 million objects, The Field Museum's Anthropology staff has a heady task: many of these objects came to the Museum decades ago, at a time when now-accepted object treatment was not yet standard.*

## WHY THE ANTHROPOLOGY LABORATORY NEEDS YOUR SUPPORT

We are proud to be an ambassador for Chicago and an active member in worldwide cultural and scientific communities. But the real excitement comes from seeing how the collections stimulate new ways of thinking.

Schoolchildren can see for themselves – in textiles, tools, masks, bowls, boats and scrolls – cultural traditions that can be traced to life in our own city today. Through a highly successful internship and training program, young adults from universities, tribes and high schools exchange their time for the rare opportunity to work with our world-class collections. The quality of our collections and staff encourages collaboration with tribal elders, other museums and visiting scientists from around the world.

With your help, renovation of the Anthropology Laboratory will ensure that The Field Museum's unique collections receive the care, housing and analytical attention they deserve. New tools will support our effort to present a current, holistic interpretation of the cultures that generate such rare treasures.

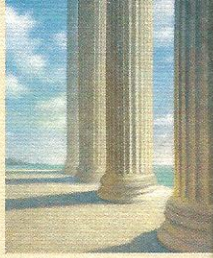
## DONOR RECOGNITION

A wide range of naming and acknowledgment opportunities is available for support of the Anthropology Laboratory at most gift levels. Available selections may include recognition displayed prominently in Stanley Field Hall; in programming materials and advertising; in new Anthropology Laboratory preview and opening materials; in media releases and in a variety of Museum printed materials.



CAMPAIGN *for* THE FIELD MUSEUM

UNDERSTAND THE PAST  
SHAPE THE FUTURE



THE FIELD MUSEUM

1400 South Lake Shore Drive  
Chicago, IL 60605-2496

[www.fieldmuseum.org](http://www.fieldmuseum.org)

